

Spartan

ACC.20 TOGETHER WITH
**WORLD CONGRESS
OF CARDIOLOGY** **VIRTUAL**

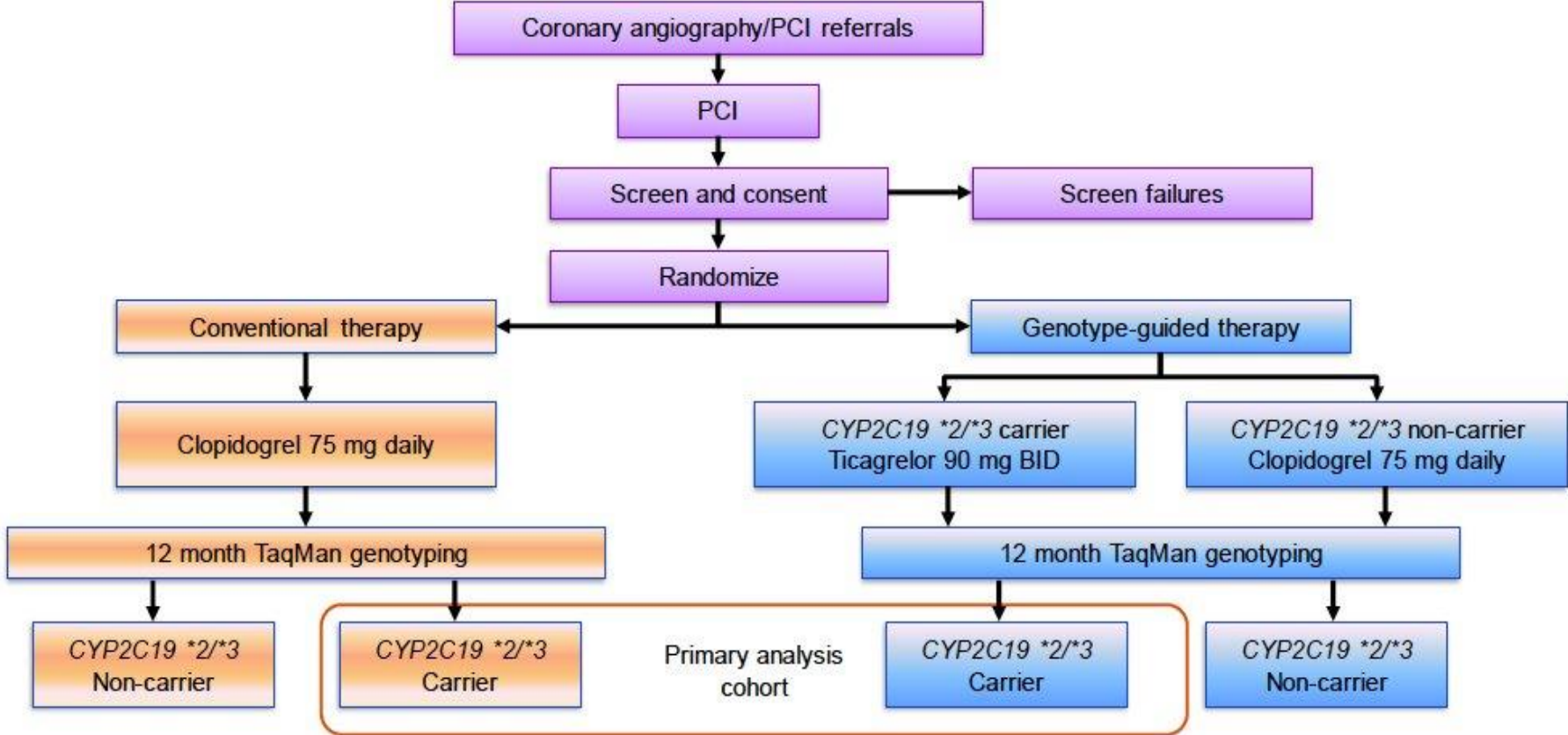
**3-DAY
EXPERIENCE**

**MARCH
28-30**

The TAILOR-PCI Clinical Trail Results

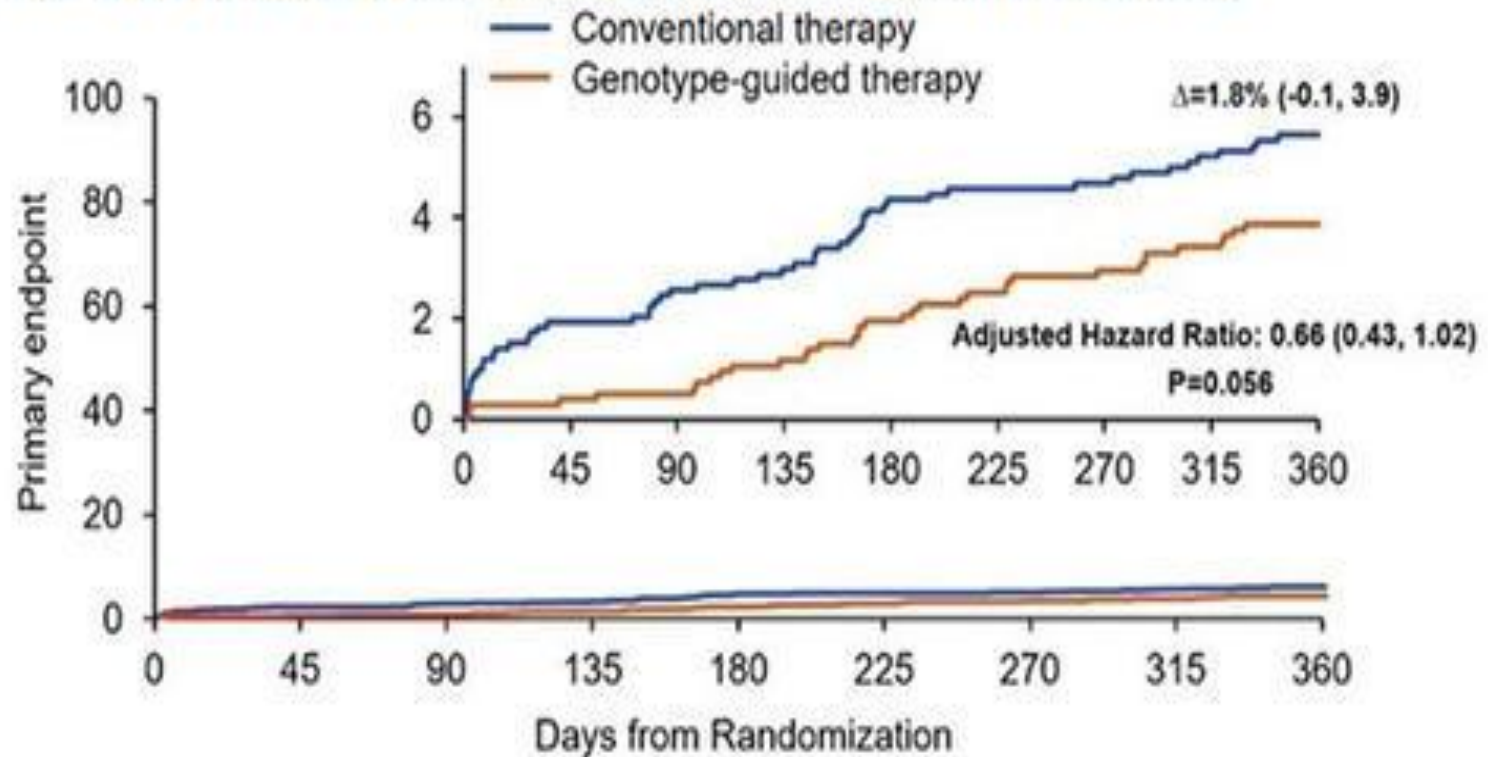
March 28th from 9:40 am - 9:52 am on the Hot Topics Channel

Study Design



Primary EndPoint

Composite of CV death, MI, stroke, recurrent ischemia, stent thrombosis

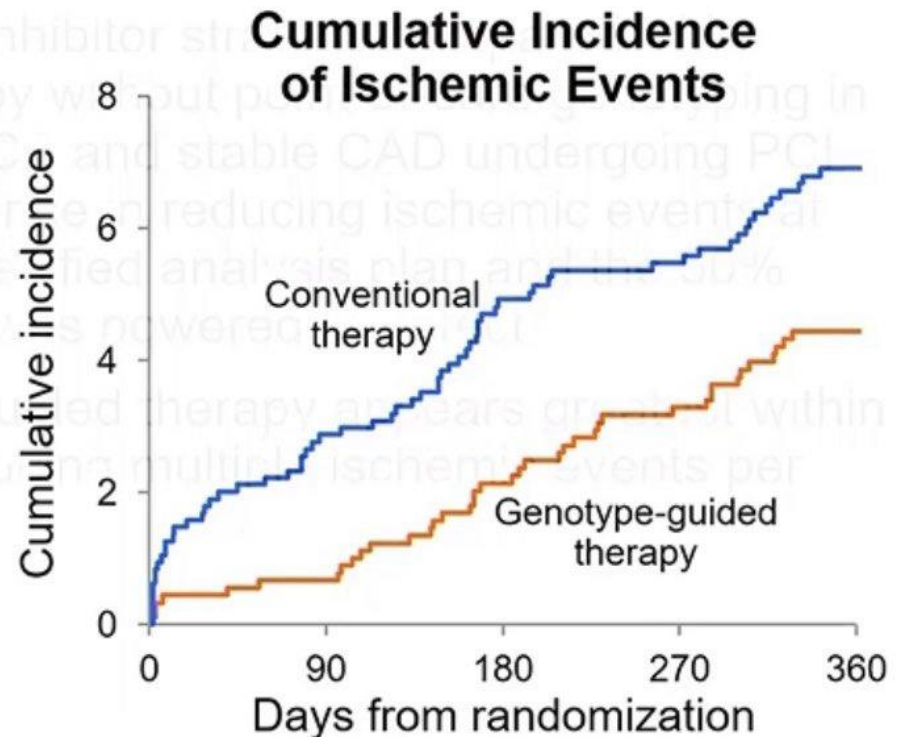


Conventional therapy	946	906	898	894	876	867	864	859	604
Genotype-guided therapy	903	875	870	863	854	838	833	824	556

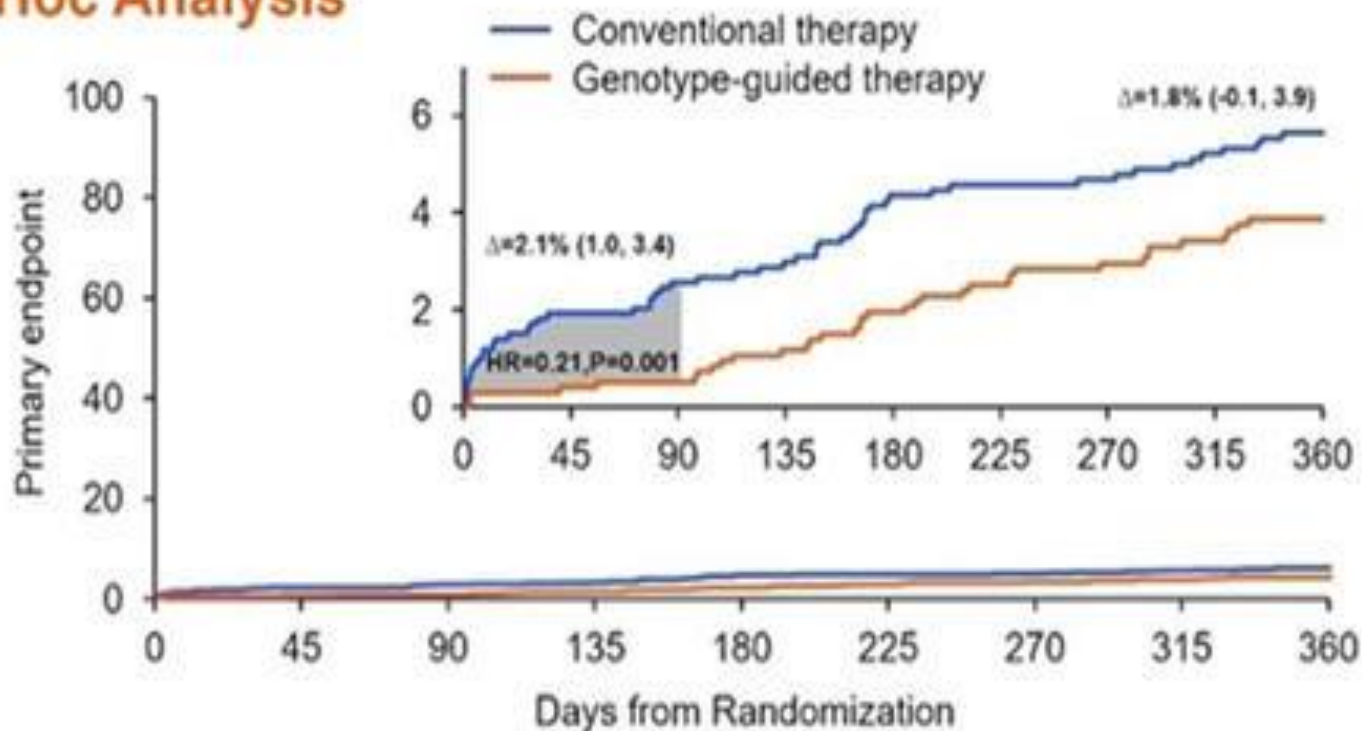
Pre-specified Sensitivity Analyses

Multiple recurrent events

- ▶ Instead of “time-to-first-event”, every primary endpoint event (MI, CVA, stent thrombosis, severe recurrent ischemia, CV death) within study period contributes to estimating treatment effect
- ▶ **HR 0.60 (95% CI 0.41-0.89), P=0.011**



Primary EndPoint Post-Hoc Analysis



Conventional therapy	946	906	898	894	876	867	864	859	604
Genotype-guided therapy	903	875	870	863	854	838	833	824	556